

SPRING 2022 EDITION



By Bert Denée

Welcome to the Spring edition of Kalmar News.

As we rapidly approach the end of another year, the oft-repeated question again raises its head: “where did it go?”. In our case the answer would be, “Building stuff”. Having at last thrown off the shackles of Covid lockdowns, Levels, Traffic lights and in spite of material shortages, labour shortages and Putin’s ego we have managed to successfully complete several projects including 308 Remuera Road, Marlborough Apartments, Todd Plaza, Bloom Lincoln and Metlifecare Edgewater as well as several fit-outs for the Ministry of Social Development, a teenage refuge for Oranga Tamariki and refurbishing the Marae at the University of Auckland. We are also continuing with and have started several new projects which are contributing to our record workload this year and which you can read more about in this issue of Kalmar News.

Next year is looking to be just as busy, and with the borders now creaking open, we are starting to once again welcome new employees from overseas. It appears that some more certainty is also returning to the material supply chain,

although price stability is still eluding us. Almost all of our forward work is for existing, repeat clients which is a testimony to the performance of our site teams in delivering excellent work and meeting or exceeding our clients’ expectations, so well done everyone!

With less than 6 weeks to go until Christmas, we are rapidly approaching the silly season of celebration, parties and (occasionally) over-indulgence. Let’s enjoy ourselves this Christmas; I’m sure we all deserve a break and the fun of a good party, but at the risk of sounding like a broken record, please resist the temptation to get behind the wheel if you have had a few too many.

INSIDE THIS ISSUE

Spring Edition 2022

CONTENTS	PAGE
Project Updates	2
Health & Safety	16
Kalmar Staff News	17
Events	21

Ovation Apartments

By Neil Ball

Ovation Apartments

With The Marlborough Apartments completed earlier this year, the focus has turned towards completing Ovation, a high-end 19-unit development built over 6 levels and a basement. The outlook over the Waitemata Harbour is truly breath-taking.

Internally the final touches are being applied while preparing for the final architect and purchaser inspections and council final inspections are already underway.

The scaffold has been dismantled, unveiling the facade and opening up the podium and site works, with the team making full use of the improving weather conditions.

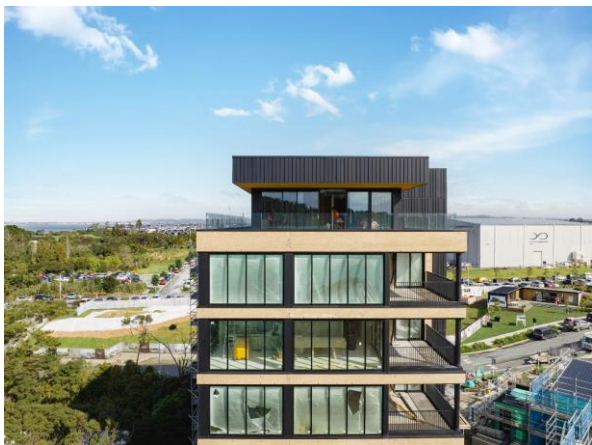
Nicholas Botha is leading the team with Karsten Jaeger, Adam Domok, Tony Shi and Domingo Espinoza in the field, while Martin Verhoeven and Faye Yu are working behind the scenes to control the commercial aspects of the delivery and assisting with the project handover material.

It's not all hard work as we congratulate Martin Verhoeven and his wife Sarah who were married on 22nd October 2022. We wish you all the best and hope you enjoy this journey together.

The current forecast completion is the end of November 2022 to enable settlements before Christmas. The team is challenged with maintaining their CCC uplift record that took just 4 days to process on The Marlborough. The expectations are high, and the team is ready for this challenge.

We thank our subcontractors and suppliers for their efforts through what has been a difficult time in our industry. We also welcome the change in Winton management and our continuing strong relationships.

We are proud to be delivering another successful project and look forward to the final handover of the Ovation apartments.





The Townhouses

These two townhouses are a separable portion under the Ovation contract.

The two months of pre-nail framing delays are now a distant memory as the project develops momentum through all aspects of the build sequence.

With the facade complete, the scaffolding has been removed to allow the external works to commence. Internally, the GIB lining is finished and after managing purchaser variations changes, the gib stopping is in progress.

Completion is scheduled for a January 2023 handover, but we are making every effort to finish this before Christmas.



The Barracks Hobsonville

By Neil Ball

There has been a lot of activity this period that includes completing the structure, external framing and the roof cladding installation.

Logistically this has been a challenging build with the structure installation taking place from outside the site boundary, involving coordinated road closures, alignment of deliveries and the weather challenges encountered.

The Harbour team have done exceptionally well with these challenges, with Simon pulling out all the stops to ensure the programme and delivery outputs are maintained. Nick has been keeping a close eye on the project, with Mikhail managing the financial aspects.

The first fix elements are well underway. Internal framing is nearing completion and the first fix trades are commencing.

The focus of this next period is to become watertight and drop the scaffold.

This four-storey development with basement car parking is well on track for handover and completion in March 2023. We look forward to the roof shout activities to celebrate this milestone in the coming months.



Jimmy's Point Hobsonville

By Neil Ball

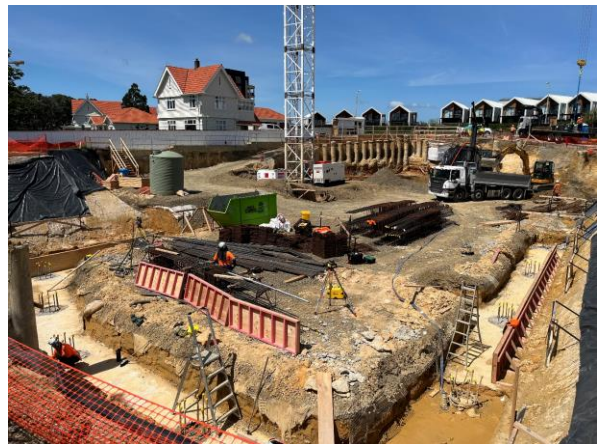
Jimmy's Point is the latest apartment development to commence in Launch Bay. The 30 luxury apartments are spread over 5 levels and an extensive basement level. The site is positioned against the seafront overlooking the Greenhithe waterways, showcasing some exquisite views.

The bulk excavation and in-ground piling works have recently been finished, which has been a challenging task working through the winter period. With the dryer weather on the horizon, the detailed excavation and ground beams are progressing well.

The tower crane has been erected and commissioned, and the site team are making full use of this resource to complete the in-ground activities and to allow precast deliveries to commence in November.

Branden Venter joins the team as the site Project Manager, and we welcome new recruits Pieter Swart and Tony Van Heuven to the team. Yulia has been enjoying the larger team environment, while Gerhard manages the overall site management duties, with Nick Rew coordinating the structural elements of the build sequence. Lance has established on site with the Harbour crews and let us not forget the health and safety support that Greg Bailey continues to provide our teams.

It's been a collaborative design process, through an ECI engagement, the staged consenting process, and into the construction phase to ensure that the project continues the momentum it has been generating with the in-ground piling works completed by Contract Landscapes.



Onehunga Mall Club

By Ross Duxfield

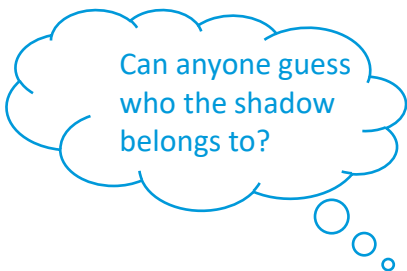
Completion of the project is tracking well for the end of 2023.



The project has progressed well over the last few months, considering the terrible weather we have had, with L4 being completed and the L5 floor structure well underway.

We have had 4 new site management team members join us – Donovan Ratner, Jayden Liu, Alan Watson and Dave Ross. We appreciate having their experience in the team and look forward to the project progressing further over the coming months as they get into their roles.

We have now started work on the façade at Level 2 and the work to the ground floor carpark level is well underway with the aim to have the slab completed before the end of the year.



Remuera Gardens

By Ross Duxfield

We have started!

It has taken a while to get going due to consenting challenges, but work is now underway.



The project, for Real Living Group, is a 5 Level, 58-Unit Retirement Apartment building in the Remuera Gardens Retirement Village in Remuera.

We are on site with demolition now complete and critical drainage diversions about to start.

Luke Kus, Gene Larsen, Steven Francis and the team are set up on site in one of the neighbouring houses. They are looking forward to finally breaking ground.

The site office would have to be one of the best site offices around with multiple indoor/outdoor areas for those summer barbeques. Don't forget there is work to do lads.

Luke is proving himself as a great barbeque chef and we are looking forward to many milestone celebrations as we progress through the project.

We expect to be into retaining work and piling in January 2023 and have the structure well advanced by the end of next year.



Metlifecare Orion Point Hobsonville

By Nathan Halloran

There is a noticeable increase in energy levels in the team as temperatures rise and summer approaches.

We would like to extend a warm welcome to all our new team members on site. Grigory Plekhotkin joins us as Site Manager for Building D with Jason Underhay leading the Façade team, Isaac Fa'alogo, Senior QS for Stage 3 (G&H) and Rafiq Sheikh our Handover Supervisor for Buildings E&F. We are grateful for the wealth of specialised knowledge adding value to our Kalmar site team.

Stage 1 Buildings E&F achieved a significant milestone with successful Practical Completion inspections held on 14th October. This milestone has been achieved ahead of the contract date and includes at least 4 weeks of covid delays, supply interruptions and significant sickness absenteeism. The client was quick to comment that the quality achieved sets a benchmark for other MLC developments. The timely completion and quality achieved is a direct reflection of the efforts of the wider construction team. Whilst we still have many 'balls in the air' waiting for client release of key services connections, this is nonetheless a fantastic milestone for the project. Another key milestone is the commencement of landscaping works around buildings E&F. The Metlifecare sales team is chomping at the bit to move into their sales suite within building E and will no doubt commence viewings with a number of potential buyers already circulating.

There have been many milestones achieved on Stage 2 Buildings C&D, notably the completion of the structure of both buildings. Harbour Construction certainly deserve recognition for a job well done considering the challenges they overcame with substantial material supply interruptions, sickness absenteeism and an uncooperative external civil works contractor. Special mention goes out to Cliff Busher and his structure team for their efforts.



Metlifecare Orion Point Hobsonville cont.

Now that the structure is complete Kalmar Site Managers Zubin Hansotia (Building C) and Grigory Plekhotkin (Building D) certainly have their work cut out for them with the roof structure, façade and fit-out underway for both buildings. Another key event will be the removal of the tower crane which has been a local landmark since its erection.

One of the key focuses for the next period will be coordinating and agreeing expectations of the client in terms of delivery for buildings C&D. Contained within Buildings C&D are key features of the village. Kalmar is striving to providing the client with a staged pathway to completion and meeting agreed expectations.

Stage 4 Pavilion - the roof, windows and external cladding are on course for completion by the end of October. The fit-out element is due to commence early November focusing on first fix services and insulation works with practical completion targeted early in the new year.

Works are underway to relocate the Kalmar site compound to what we hope will be its final destination. This move is on the back of the recent commitment to Buildings G&H (Stage 3) and to allow space to construct the Stage 4 Care buildings.

On a social note, we acknowledge Joshua Clipstone, who is scheduled to race in one of the toughest and largest MTB events in the Southern Hemisphere - The Waka 100km MTB Marathon in Rotorua. This event is not for the faint hearted and involves a monstrous amount of training. With the Rodney Coastal Challenge fast approaching, he will also be representing Orion Point alongside fellow teammates Greg Bailey, Gary Zhao and Tess Arches.

With the Christmas and New Year period creeping up on us, emphasis will be to continue driving hard, maintaining our programme targets and ensuring that safety, quality, and productivity continue to meet expectations.



Foundation on George, Parnell

By Jacobus Mienie

The site team are certainly glad to start seeing more sunlight hours and hopefully extended settled weather as spring leaves us and summer makes a return

The Foundation project has achieved several milestones recently, most notably the completion of the primary concrete structure. In doing so, the structure build team faced multiple challenges through the structure phase due to Covid absences and substantial material shortages. All the while the team managed to deliver the structure two weeks ahead of programme to the delight of the façade and fit-out teams.

One of the factors for our current success has been the tremendous drive initiated by Michael van der Walt with the backup of his structure team leaders, Iloa Pauu, Wehan Oosthuizen, Laksh Jaishankar and Arona Pere.

The external façade is taking shape with the completion of scaffold and Level 1 window installation. Apart from glazing, the façade is chiefly made up of natural European stone cladding. The commencement of the stone installation has really emphasised what will be a truly magnificent product that will stand the test of time and what will no doubt be a stunning landmark in Parnell.

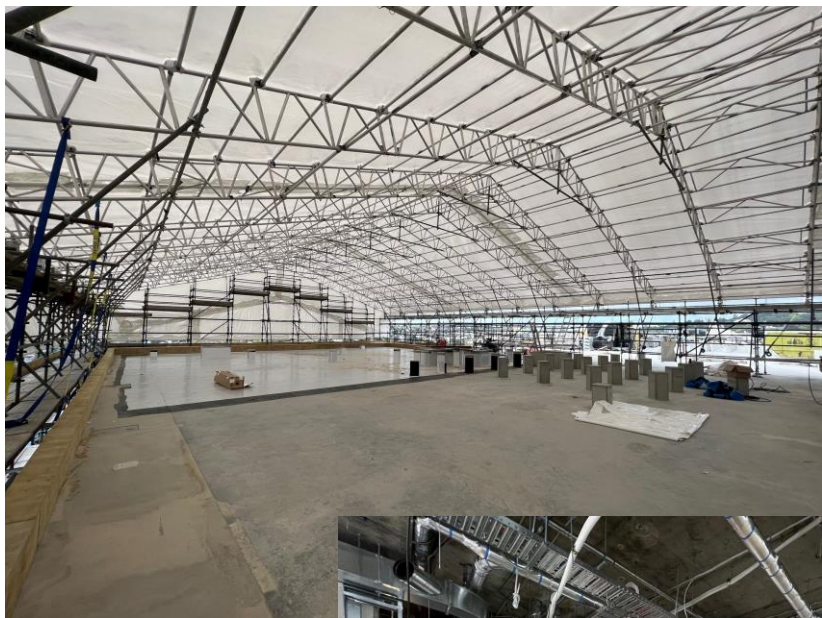


Foundation on George, Parnell cont.

The Kalmar team has seen a few changes since our last newsletter; in particular our window and façade expert Adrian Stewart has joined the team. Adrian adds a wealth of experience to the façade team and will keep them on the straight and narrow. The Fit-out Team led by Dave Karim continues to expand with the addition of Lev Afon, Bernard Tan and Wehan Oosthuizen. Lordkarlo Ibarra has joined the façade team and has the challenging task of meeting Adrian’s expectations. Etienne Skelton also joins the team and will manage the demolition of Awhina House.

Anticipation in the team is growing as final preparations are completed for the demolition of Awhina House including our site office. This follows months of meticulous planning and additional preparation to minimise disruption to the local community. Foremost in the planning is to ensure the newly arrived babies in Birthcare aren’t bothered by the demolition only a few metres away from the Birthcare façade. The Kalmar site team will shortly move out of our current site office location to a new office above the Jubilee building library.

Things are expected to ramp up on site with new sub-contractors joining the team almost daily. The focus is to exceed the clients’ expectations of product quality, however we will not lose sight of the fundamental expectation to ensure that the people who choose to work at Foundation return home to their families each day unharmed.



The Grove Stages 2 and 3 Orewa

By Tim Ellery

We've made good progress over the past few months, completing the structure for Stage 3, starting the ceiling grid in the apartments on Stage 2, and the façade is nearly ready for painting.



In August the team headed to Woodhill Forest for a game of paintball. See photos on page 20. Unfortunately, our team was mixed with others participating on the day, and it was impossible to determine who was who. This might have been a good thing... aye Lance!

Murray Johnson took control of a recent site BBQ with his twist on cooking the "perfect steak" which was enjoyed by everyone.

We are looking forward to the next one Murray!

Subcontractor numbers have doubled and continue to grow as work begins on many facets of the project at once. A few minor purchaser variations are starting to come through as interest around the town grows.

Harold Fulo will be soon be joining another site. He has been instrumental in coordinating the precast and services and assisting with the timber roof framing to ensure that everything goes smoothly. Thank you for your efforts at The Grove, Harold.

Alexsei Paule has recently joined the team to assist with the fit-out and he's jumped straight in and is making great gains.

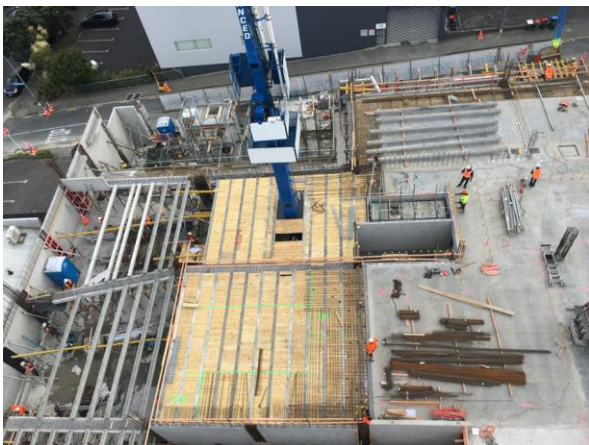


Proxima Residences, Newton

By Phil Williams

Proxima is a 9 Level building made up of two and a half levels of parking and seven and a half levels of apartments adjacent to Newton Road in Eden Terrace. The apartments are a mixture of 63 single units and 4 penthouses.

Since the last update, the project is starting to take shape. We are finally out of the ground after what felt like an eternity in the trenches, further impacted by high precipitation through the winter period and we are underway with the suspended slabs above ground. The first half of Level 3 has been poured and the second half will be poured at the beginning of November. The structure is being targeted to be completed by end of April 2023.



With the completion of the first suspended slabs, we can commence the basement works which will begin with the removing the earth berm which was kept in place to support the retaining piles until level 2 was poured. We can then complete the shotcrete and begin prep works for the basement slab. Wayne Mckeown is joining the team to look after the basement scope of work, and we welcome him back to Kalmar after a couple of years away.

The Façade and fit-out Consent is expected to be uplifted imminently, which will coincide with the targeted commencement of works at the beginning of December once Level 4 has been poured.

Utilities connections have begun with the transformer install underway and the Watercare connection to follow in the coming weeks.

The site team has grown further with the addition of Jun Siaw as Site Manager, Iloa Pauu leading Harbour and supported by Laksh Jaishankar and Arona Pere, responsible for the reinforcement works, quality assurance and supervising the direct labour. Thomas Lindstrom has joined the QS team and along with Pierre Gonzales and Vicki Guo, supporting Tom van Roekel, manage the commercials. A big welcome to the new team members.



The project's location and proximity to its neighbours has required good public relations to maintain relationships with all the affected parties and Neil Spencer the Project Manager has managed this aspect well and has been a good brand ambassador for Kalmar.

The market conditions are still impacting on the delivery and manufacturing timeframes, and presenting ongoing challenges to the project. Neil and Ahmad Ghalayini, Kalmar's Site Engineer are working closely with the supply chain and are innovating where required to mitigate time loss and keep the project on target to achieve the completion date.

The team has consolidated with a good dynamic evolving between personnel and, with the addition of façade and fit-out supervision, will be complete.

Thanks for the effort team.

Te Uru Apartments Stage 8 Hobsonville

By Phil Williams

Te Uru 8 Apartments for Fletcher Living Ltd consists of three buildings; Blocks A,B & C with 72 apartments including a pocket park and EV charging station.



The Project is located in Hobsonville Point opposite Memorial Park and consists of two separable portions, Buildings A & B, Separable Portion1 prioritized for a middle of June 2022 handover and Building C mid-September 2022 for Separable Portion 2.

The structure has been completed with the roof on Building C the last major pour. Lee Savage, supported by Neil Campbell, has managed the Harbour team well and provided a quality structure. Thanks Lee, who is now relocating to join the Orion project for their next stages.

The facade is progressing well with the warm roof completed on Building A and the bricks and aluminium joinery nearing completion. The warm roof has commenced on Building B and the façade has been closed in followed by the commencement of the subsequent façade elements.

The crawler crane will be demobilised in November followed by the commencement of the hard landscaping. We have arranged a Brazilian BBQ roof shout on the 11th of November 2022, to celebrate the milestone.

Market conditions remain challenging with constraints on the available resource an ongoing issue to service the project sufficiently. To mitigate, James Stevens the Site Manager has installed good communication protocols with the sub-contractors and supply chain to ensure the programme deliverables are achieved. James Stevens is well supported by the delivery team, consisting of Garth Robinson and Sukhdeep Sidhu looking after the façade and Jannie van den Berg and Edmund Changwai responsible for the interiors.

Luca Denée is running the QS team, ably supported by Jessica Brewitt and Sam Atkinson, ensuring tight financial control of the subcontractor’s and client variations.

On the social side, Jess organised a great golf night at Holey Moley, where there were a number of hole in ones..... however, I am not sure if anyone will be called up for the PGA next year.

The project has received quite a lot of attention recently on the LinkedIn platform, catching the attention of the local residents, and passing traffic, due to the Kalmar branding to the scaffold scrim. Nothing wrong with a bit of positive banter.

On a final note, we acknowledge and thank Grigory Plekhotkin for his contribution prior to moving to the Orion Project and we welcome Craig Mullane to the team.

The project is well set to achieve successful delivery, thanks team for the effort.



Disability Ramp (Riding for the Disabled)

By Bert Denée

A joint effort

This is a Kalmar sponsored project in support of Riding for the Disabled.



Our team, led by Lance Blomfield, started on the horse ramp on 3rd October 2022. The two-week programme required the ramp to be completed by the 15th so that it was ready for use after the school holidays.



Who We Are

NZRDA is a member association made up of over 50 local RDA groups who are in local communities throughout New Zealand.

The core purpose of NZRDA is to provide interaction with horses to improve health and wellbeing outcomes for people experiencing disability, or who have specific challenges or needs.

We aim to enable and support disabled people to achieve good lives including meaningful participation in, and contribution to, important life activities and roles in their community.

<https://rda.org.nz/>

“Hi Bert

I’ve been passed your email by Neil Ball as I wanted to express the thanks from our organisation direct to you for the outstanding job that has been completed by your team on our new mounting ramp for our disabled riders.

Kick-started by a generous donation from James Klein, it was also through him that the suggestion came for us to use Kalmar for the construction, and it was only through the additional contribution from your company that we now have such a great outcome. Neil has been highly professional in all his contacts with us throughout the planning and build stage and Lance Blomfield also deserves a special mention for his work with the team during the build itself.

By way of thanks, we will be holding a special Morning Tea in the near future to which Neil, Lance and your suppliers Placemakers, will be invited and I understand that the project will likely feature in your next Newsletter, which is great. We shall also be featuring it in our December Newsletter, Facebook Page and our website and we have just received confirmation that a short item and photographs of the project will also feature in the New Zealand riding for the Disabled Bulletin later this month, so we doing our best to publicise your generosity.

Should you, or any of your executive team, wish to visit us at any time, please don’t hesitate to get in touch.

Once again, thank you for your firm’s generosity – it is only through actions such as yours that we can hope to deliver on our Vision: “Reaching More Riders – Changing More Lives.

Kind regards
Tim Lofts | President | North Shore Riding for the Disabled”

University of Auckland Waipapa Marae Refurbishment

By Justin De Beer

The team at Kalmar Interiors have successfully completed Stage 1 of the Waipapa Marae Refurbishment for the University of Auckland.



Work was done across the two of the buildings, the Whare Kai and the Wharenui. Considering the cultural significance of these, the team needed to take extra care in providing the highest quality of protection. One of the more challenging aspects of the project was in the Wharenui, where we needed to remove the old floor and pour a concrete floor for the new under floor heating system.

Work also included a full refurbishment of the shower block and dining hall in the Whare Kai. Specialist lighting was completed in both buildings. External painting and making good roof, paving and gutters completed the works.



Work on Stage 2 “Commercial Kitchen and Toilet Refurbishment” has now started with a February 2023 handover.

We would like to welcome Cameron Nelson to the Kalmar Interiors team as Project Manager. In the short time he has been with us, it is clear that his “can do” attitude has made him an asset to the team.

Updates from Health and Safety

By Bert Denée

Onehunga Mall Club SiteSafe BBQ

28th September 2022

To encourage safety practices on site, SiteSafe came to OMC in September and held a Toolbox Talk, discussing site cleanliness and dust management. This was followed by a barbeque.

Two spot prizes were presented by SiteSafe to two team members – Marlon Romero and Rodel Eda. The prizes were presented by AJ Staples, Ann Chia of SiteSafe and Brendon Vannan.

Many thanks to the SiteSafe team who provided everything for the BBQ including the cooking and cleaning up afterwards.



From Left to Right: Marlon Romero (Leader Scaffolds), AJ Staples, Ann Chia (Sitesafe), Brendon Vannan and Rodel Eda (Steelheart Steel Fixers).





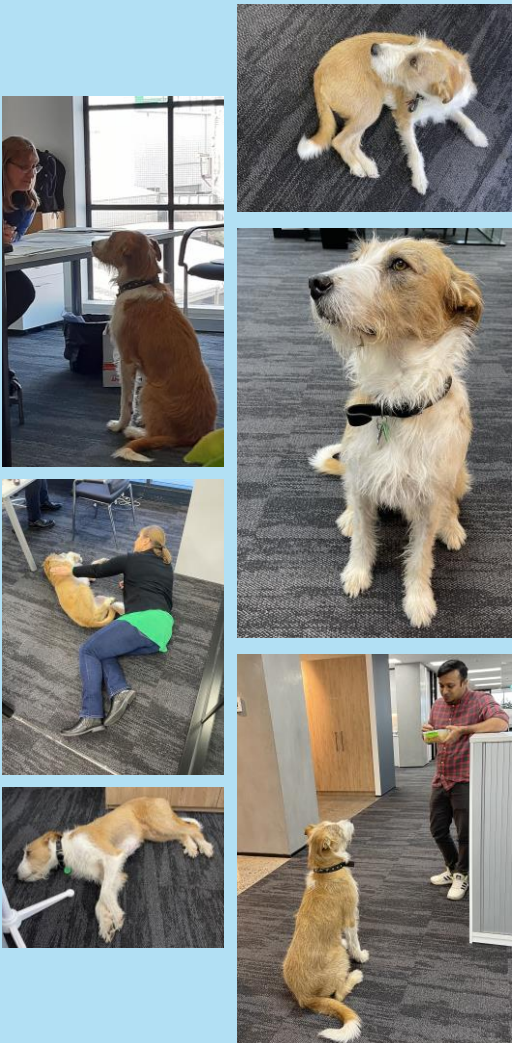
New Arrivals

Harry...

is a favourite at Head Office. He visits regularly and is very polite and gentle.

He has a particularly good nose when it comes to sniffing out Ginger Nuts.

“About that pay rise; another 3 bones a week would be good.”



Ethan Ibarrola Luckhurst

My wife, Maileen and I would like to introduce everyone to our son, born 26th September 2022. A whole day in hospital waiting for him to be born was not how we planned to spend the extra day off work. Thanks to the Foundation team for the dog.

Miller Reid Liston

Born 2nd October after a lengthy labour (50 hours). Weighing 9.9lbs (4.5kgs), so he’s a big boy.

Congratulations to Scott Liston and his partner Emily Buckley who were thrilled to finally meet their son.



Wishing you all the joy that the arrival of a new baby brings. Enjoy parenthood.



History...

Taken some fifteen years ago, but we are not saying they are old or ancient.



...and then there's Ancient History



Wedding Bells

Martin Verhoeven and Sarah Danvers were married on 22nd October 2022. The ceremony was held on the farm where they currently live, in the Waitakere Ranges.

Unfortunately, family were unable to attend, but Martin and Sarah were joined by close friends.

Thank you for sharing your special day with us. We wish you all the happiness in the world.





Poronui

November 2022

Peter and Patricia Kay made use of their Kalmar retirement gift this weekend, enjoying a few days in Poronui.





Site Events

PAINTBALL

On 27th August the Grove Team met at Woodhill for a day of Paintball, followed by a pork spit BBQ at "Lance's place".



Site Events

Onehunga Mall Club

29th August 2022

A lot has happened on Onehunga Mall Club site since the last newsletter.

A highlight was congratulating Brendon Vannan on his promotion to Project Manager and already we have appreciated his positive leadership of the team.

Congratulations Brendon. We wish you every success in your new role.



Luke Kus and his Little Red Bus

It appears that Luke has been reading Beverley Randell's books to Oliver and Madeleine and couldn't wait to bring them to life. We hope you enjoyed the Little Red Bus adventure Luke.



Office Etiquette

WHO LEFT THE TEABAG IN THE SINK



Site Events

Remuera Gardens Start up Social Event

13th October 2022

Prior to getting the project underway the Remuera Gardens team hosted a celebration at the Auckland Bowling Club. An interesting fact about the club is that it is the oldest bowling club outside the UK.

It was a magnificent event and well received by the Client, Consultants and the Project Management team.

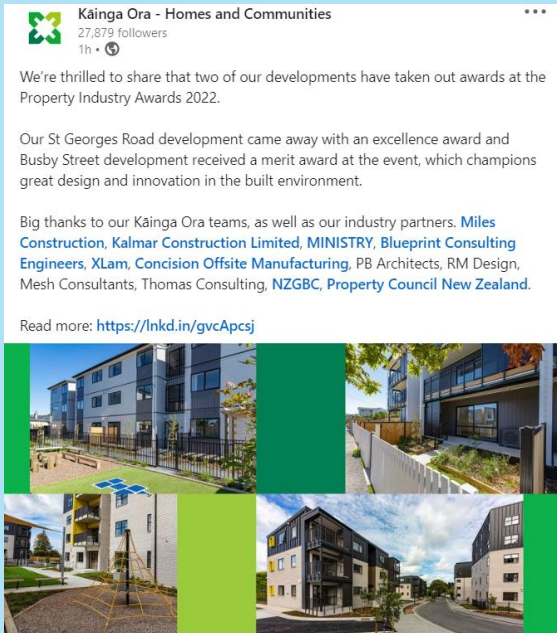


EVENTS

Property Industry Awards 2022

St. Georges Road

Posted on the Kāinga Ora's LinkedIn page on 17th August 2022.




Kāinga Ora - Homes and Communities
27,879 followers
1h • 🌐

We're thrilled to share that two of our developments have taken out awards at the Property Industry Awards 2022.

Our St Georges Road development came away with an excellence award and Busby Street development received a merit award at the event, which champions great design and innovation in the built environment.

Big thanks to our Kāinga Ora teams, as well as our industry partners. [Miles Construction](#), [Kalmar Construction Limited](#), [MINISTRY](#), [Blueprint Consulting Engineers](#), [XLam](#), [Concision Offsite Manufacturing](#), [PB Architects](#), [RM Design](#), [Mesh Consultants](#), [Thomas Consulting](#), [NZGBC](#), [Property Council New Zealand](#).

Read more: <https://lnkd.in/gvcApcsj>



NZIOB Awards for Excellence 2022

Congratulations to Nicholas Botha who won his category at the NZIOB Awards on Friday 2nd September 2022.

WINNER Projects \$10m - \$25m Nicholas Botha – The Marlborough Apartments

Well done Branden, Luke, Kowie, Guillem and Nicholas who made it through to the finals in their categories, which in itself is impressive.

FINALIST Projects under \$4m
Branden Venter – University of Auckland – “Connect “ – Digital Services

FINALIST Projects \$4m - \$10m
Luke Kus – Todd Plaza
Jacobus (Kowie) Mienie – Bloom Living – Lincoln Road

FINALIST Projects \$25m - \$40m
Guillem Ferrer – Kainga Ora – St. Georges Road

FINALIST Young Achiever Award
Nicholas Botha



EVENTS

Kalmar Quiz Night

15th September 2022

It's been seven years since we last had a Quiz Night, and what a fun night it was. There were ten teams of six (some had four or five) competing and it came down to a tie-breaker. One last question had the whole room holding its breath...and the winner.... Sassy Six with runners up Rob's Mob who were pipped at the post.



Sassy Six



Rob's Mob before being joined by Inna and Kelly



Social Club

By Rob La Trobe

Alexandra Park Trots – Mid-winter Christmas

Thirty-five staff members attended the Mid-winter Christmas function at Alexandra Park on 15th July. The event is an opportunity to dress up a little, feast on amazing food, place a few bets and enjoy the company of work mates. Plenty of good times and laughs were shared in-between celebrating wins. Lady luck seemed to be with team MLC Orion Point led by Zubin Hansotia. The boys must have been rubbing his head for luck, whilst Neil Ball was seen practicing his hitchhiking technique late in the evening. Hopefully, he saved a few dollars getting home with his wife.



Social Club cont.

All Whites vs Australia

25th September 2022

It wasn't the ending Winston Reid was hoping for in his last game for the All Whites. Going down 2-0 to Australia. The strong Kalmar contingent were vocal, probably due to a little lubrication (and food) at the pre-game event, but in the end, we were not only burnt on the field but off it too. It was a scorcher of a day with supporter gear and sunblock flying off the shelves. The game had a New Zealand record football crowd in support of the home team. The Aussies were just too good on the day, and we wish them all the best for the World Cup.



- 27/11/2022** Rangitoto Ferry Trip and Summit Walk
2023 NZ Breakers Basketball Match
Riverhead Tavern Cruise
Social Cooking Challenge
Fishing Trip