

AUTUMN 2023 EDITION



Welcome to the Autumn edition of Kalmar News.

Having left the winter solstice behind us we can now look forward to a bit more daylight each day. The construction market is definitely starting to tighten up as the economy, and more particularly the housing market, has slowed down. We have quite a few projects finishing this year and so Rob Cunnington and his team are very busy pricing new work to replace those projects. I do think we are very good at what we do, the market knows that, and there will be opportunities that we need to be ready to take.

We've got very good projects on that we're doing right now, and despite the challenges of some subcontractor struggles and failures, all our projects are performing strongly. KBL Joinery's collapse was particularly irksome, and the performance of other subcontractors struggling with an escalating market has meant reletting of some trades has been required.

Having been an Auckland-only builder for many years, we are currently working on our first full out-of-town contract in the winterless North at Kerikeri. The project is going very well, and the team has settled into the expat lifestyle well.

Our sustainability journey with Toitu Envirocare has moved along at pace. We've just successfully completed our first audit as part of the Carbon Reduce programme, heading towards becoming a certified Carbon Zero organization. Toitu is part of Landcare Research, which is a government owned

Crown Research Institute. Enviromark Accreditation is next on the list.

We've also engaged with Breviss Wolfram from Wolfram Holdings to guide us towards a better understanding of and connection with Te Ao Maori. He has been busy surveying Kalmar's staff in order to meaningfully shape this journey over the next few years.

The weather over the last few months has certainly been testing, but our site teams seem to have developed an especially waterproof skin, with work carrying on as much as humanly possible. To quote from Shakespeare's King Lear: "That sir which serves and seeks for gain, and follows but for form, will pack when it begins to rain and leave thee in the storm". Or in today's language, when the going gets tough, the tough get going.

With La Niña now apparently on the way out and El Niño coming into play, we can hopefully look forward to a bit less rain, and more sunshine and dry westerlies.

By Bert Denee

INSIDE THIS ISSUE

Autumn Edition 2023

CONTENTS	PAGE
Project Updates	2
Health & Safety	23
Kalmar Staff News	24
Events	27

Metlifecare Orion Point, Hobsonville

By Nicholas Botha

Winter is fast approaching, and with the completion of the project on the horizon, it's all hands-on deck and full steam ahead at Metlifecare Orion Point. Despite the ongoing challenges posed by the weather, our team remains focused on delivering a high-quality product to our client.

The site team has found its rhythm after a series of transitions. We welcome Sean Simpkins to the team, as Site Administrator and Dylan Fourie as Fit-out/Façade Supervisor. The team is thrilled to have Karsten Jaeger back after he successfully resolved matters at Ovation, and now that the Ovation Townhouses have been completed.

It is pleasing to announce that the Stage 1 (Buildings E&F) CCC application has been lodged. Metlifecare are expecting further residents to move in over this coming period.



The Pavilion is now Practically Complete, with the PC certificate imminent, and we are scheduled to lodge the CCC application for the building this month.

The Pavilion has already become a hub of activity, hosting various functions for Metlifecare, and the feedback has been overwhelmingly positive.



PROJECT UPDATES

Stage 2 (Buildings C&D) are starting to take shape internally, with the majority of the plasterboard lining complete. The team has faced continuous design challenges on both buildings, but they have worked together to maintain the momentum. Building D is reaching a significant milestone, with the scaffolding due to be dismantled by the end of June 2023. Building C has received its first set of kitchens, and these have been installed on B1 in six apartments and the sample unit on Level 1.



The team’s camaraderie continues to flourish as we actively engage in social events. We recently had a fantastic night out at Archie Brothers, where we all enjoyed an evening of tenpin bowling and arcade games, and the spirit was highly competitive. Congratulations to Nick Watson for securing the top spot, followed closely by Dylan Fourie in second place with Nick Botha hot on their heels. A thrilling showdown is already in the works!



As we enter the final four months of this project, our team possesses a clear understanding of the tasks ahead and the effort required to ensure the successful delivery of these buildings. Everyone is extremely excited and eager to see the completed product. However, one challenge that lies ahead will be keeping Manie out of the pool once the project is complete. It will definitely be a well-deserved dip if he manages to slip through our net..

Ovation Townhouses, Hobsonville

By Neil Ball



These two high-end townhouses were completed as a Separable Portion of the Ovation Apartments. Dave Ross, Karsten Jaeger and Mikhail Filatov have done an exceptional job in delivering a quality product with our subcontractor, LBY Construction.

Well done everyone, this was a collective effort all around. We are proud to have completed this with South Pacific Architecture and Winton Properties as part of the continued portfolio of properties shaping the Hobsonville landscape.



The Barracks, Hobsonville

By Neil Ball

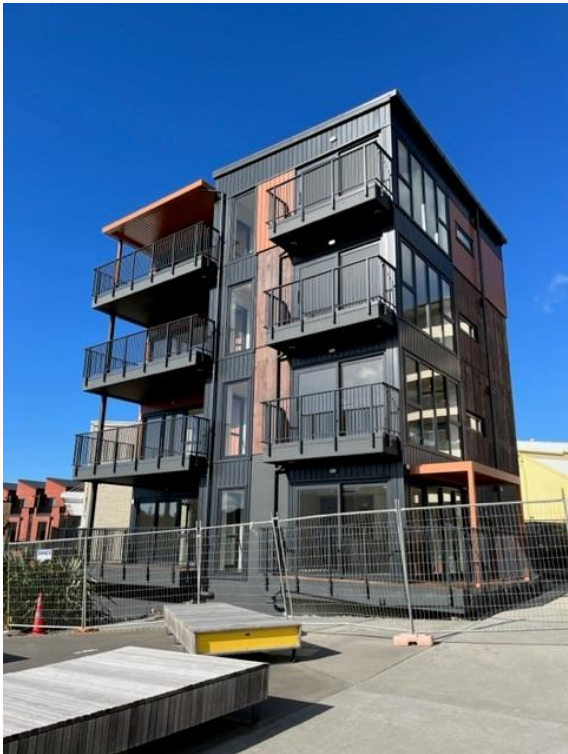
Directly opposite The Marlborough Apartments, which recently won a Gold Award at the New Zealand Commercial Projects Awards 2023, is The Barracks, Launch Bay Apartments. This four-storey, four-apartment development is almost ready for final handover.

The Barracks Apartments have been constructed in a Super Lot Subdivision where we worked alongside house group builders, Mike Greer. The development has shared site access, and with the completion of the client JOAL civil works, final CCC can be applied for.

The building is now complete with final defecting in progress. Simon Von Pearson and Mikhail Filatov have been responsible for delivering this project, with Henry Winsor and Brandon Hayes offering some assistance in the final stages.

We look forward to publishing the completed pictures and showcasing the high standard of quality that has been so well received by all who have walked through the project.

Thanks to all the subcontractors, suppliers and design team for a great outcome, and to our client Winton, for the opportunity to deliver another great project.



Jimmy's Point, Hobsonville

By Neil Ball

Jimmy's Point is taking shape as the project starts to gain momentum with the vertical construction moving out of the basement and into the upper structural floor cycles.

There is never a dull moment in construction and the Jimmy's Point team has been challenged but has achieved their first major milestone on the project; the completion of the podium structure. This achievement was celebrated by the Kalmar Concrete and Construction teams initiating their tactical advantages against each other on the paintball battleground for a well-earned social event. For some reason no one wants to claim bragging rights, but there were a few war stories shared the following week.

The final structure is expected to be completed in August 2023, and the views improve as each level is completed. Keep an eye out for the upcoming roof shout event.

We welcome returning employee, Joy Rivera as she takes the design management lead, and assists Jerrin Koshy in the coordination hub. Gerhard Steenkamp, Lance Blomfield, Eric Yuan and Rusty (Eria Hekeare) are enthusiastically pushing the site programme. Gerhard Steenkamp has returned to Kalmar as the site team looks to re-set and expand as multiple work faces start to open across civils, facade and fit-out.

Whilst Branden Venter has had a tight rein on the project, he has also been busy preparing the nursery for his newborn son, Blake. Blake was delivered over the Easter weekend, and both his brother Logan and mum are pleased to have him home. During this time, Jerrin was away in India getting engaged and has already started preparing the wedding ceremonies for later in the year. Congratulations to you both. We wish you all the best as you start adding to a lifetime of making new memories.



PROJECT UPDATES



Onehunga Mall Club, Onehunga

By Ross Duxfield

It has been a big few months at OMC with a lot happening. The structure has been finished, the roof is complete, the façade is well on its way to the top, lifts are going in and the fit-out is progressing well with the internal painting now underway.

Over the King’s birthday weekend, the tower crane was removed. We booked it for the long weekend because Smiths wanted some time up their sleeve to make sure they got it done, and they did, by the end of the Saturday.

Speaking of Kings, our PM (Brendon Vannan) stole the show at the recent company Medieval Supper. He was crowned King and made the most of the opportunity to control his subjects. All hail King Brendon!

The OMC team recently said goodbye to two of its team. Harsh Upadhyay is off to help with the Stage 2 at Foundation and Douw van der Walt is on his way to Remuera Gardens to help the team with the structure. We sent them on their way with a goodbye function held at a local restaurant.



Remuera Gardens, Remuera

By Ross Duxfield

Piling is in its final run and is expected to be completed any day now. The counter rotating rig is capable of pouring a pile every 20 minutes from the start of drilling to placing of the concrete and cage. With limitations of space on site, relocating the rig has resulted in limited capacity of 8 piles per day, which is still a great result and earned the CLL team one of Luke’s special barbeques as thanks for their efforts.

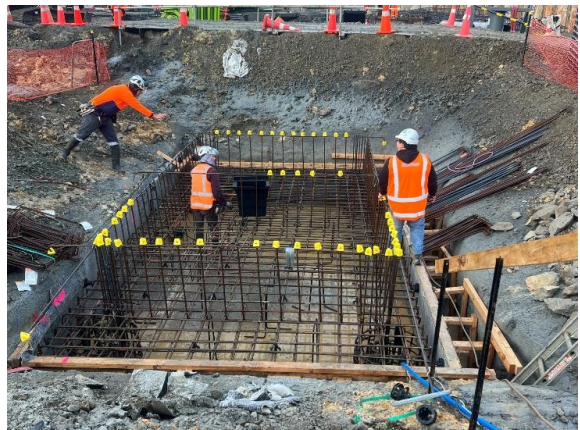


The first of two lift pits has been dug and the concrete work is underway. “Luke’s Bridge” (seen here with the pump line running over it) is nearing the end of its life and will be removed over the next few weeks. We are then into the basement slab.



The site team is aiming to have the second suspended slab completed by the end of the year.

We celebrated Kaustubh graduating with his New Zealand Diploma in Construction – Quantity Surveying. He put on a traditional lunch for us, and it went down well. Even Gene enjoyed the vegetarian Samosa supplied. Well done, Kaustubh.



Inna Goodwin is graduating in June, so we are looking forward to another celebration. Our site engineer Nick Rew has started his Master of Civil Engineering course which is expected to be completed mid-2025.

Great to see the team doing so well in their studies.

Photos of Kaustubh’s graduation are on Page 24.

PROJECT UPDATES

Remuera Gardens International Lunch

By Inna Goodwin

On the 4th of May, the team at Remuera Gardens came together to share an international lunch with their colleagues, featuring an array of delicious dishes from around the world. Traditional Kiwi Pavlova with Pineapple Lumps and marinated mussels represented New Zealand. Poland was represented with Faworki, India brought Palak Paneer with Tandoori Roti to the table, while the Philippines presented Chicken Adobo and Ube cake. South Korea added Kimbap to the mix, and Malaysia contributed Chicken Curry.

It was a fantastic opportunity for the team to enjoy different cuisines and celebrate cultural diversity.



Metlifecare Oakridge Kerikeri

By Phil Williams

The Oakridge project is a high dependency care facility that will be an addition to the existing Metlifecare Village in Kerikeri. The project consists of a two-storey building containing 65 care suites as well as amenities for the village including a café, commercial kitchen, and hair salon. The structure of the building consists of structural steel, load bearing timber framing and cross laminated timber (CLT) flooring and walls.



Despite the weather the Oakridge Care Building has been progressing well with the ground floor slab complete, the cross laminated timber for the first floor installed and trusses due on site to begin construction of the roof.



The erection of the tower crane on site seems to be a first for Kerikeri and has drawn a lot of attention from our neighbours and the local community. The façade is also progressing with the first windows installed and the brick and Resene Integra cladding commencing.

With the first shop drawings starting from 50% detailed design, there has been a lot of extra coordination required during our subcontractor’s shop drawing process to date and Edmund Changwai has done a great job so far to ensure the required information is available on time to keep the project moving.

The project is a Greenstar 6, and involves close collaboration with the project’s sustainability consultant, NDY, who have been a great help in ensuring that the site team are well versed in understanding the requirements to obtain certification.

In recent weeks we have reached a significant milestone with the delivery of the first of our premanufactured bathroom pods from Sync in Melbourne, which will temporarily be placed into their respective care suites until the building is watertight and they can be manoeuvred into their final position. With Wayne Mckeown’s bathroom pod experience, the first stage of the installation has run smoothly. The bathroom pods are an innovative “Metlifecare Care Suite” design and the team at Sync and Metlifecare have been helpful with ensuring everything is well coordinated.

In May, we welcomed Rheinhardt du Toit to the team. He is looking after the fit-out, starting with the first fix services on the ground floor. Rheinhardt has just relocated from South Africa and settled into Kerikeri with his wife and is making a great addition to the team.

PROJECT UPDATES

The Kalmar Construction and Kalmar Concrete teams enjoyed a day of fishing in the Whangaroa Harbour on a local charter. This was a well-deserved day out for the team following completion of the ground floor slab and the scope Kalmar Concrete was involved with at Oakridge. (Photo below shows one of Tim's biggest catches of the day!...).



Even though it has been reported in the media that there are concerns with the welfare of the Snapper population, we can confirm Edmund made a significant contribution to ensure they were well fed on this occasion.

In their spare time Dillon and Edmund have joined the Kerikeri Rugby club playing in both their Division 1 and Premiership teams and while their level of fitness leaves a lot to be desired this has been a great way to get involved with the local community and local trade companies that sponsor the club (some of which are also involved in the project).

Well done team.



Kerikeri Winterless North ?

Jason Panizares and Isagani Sellote from Kalmar Concrete Enjoying what Greg Bailey calls “the winterless north 🤔”



Foundation on George, Parnell

By Harrison Chapman

The Foundation project has made great progress over the past few months. Despite facing numerous challenges, the project team has been dedicating considerable time and effort to ensure smooth progress and another successful completion targeted for September.

One noteworthy achievement is the revelation of the façade from behind the scaffolding, highlighting the exquisite combination of Jura Limestone and Bronze Anodized Cladding. Under the direction of Façade Manager Adrian Stewart, the team has been diligently pursuing the installation of the stonework, targeting completion by August.

The fit-out process has presented its own set of complexities, with the stringent tolerances demanded by the very high level of quality. Due to the unforeseen liquidation of KBL joinery, the extensive joinery scope has been re-let to four different companies spanning the North Island, from Kerikeri to Tauranga. The diligent efforts of the fit-out team are pushing the second fix ahead. The sample unit is nearing completion, highlighting the extremely narrow tolerances and the team’s commitment to achieving these.

Following the successful completion of the demolition of Awhina House and excavation works, the basement ramp structure has taken shape. Despite the constant battle with Auckland rain, the Kalmar Concrete team has persevered to maintain progress. Works on the Pavilion structure, that will serve as a connection between Building 1 and 2, are also well underway.

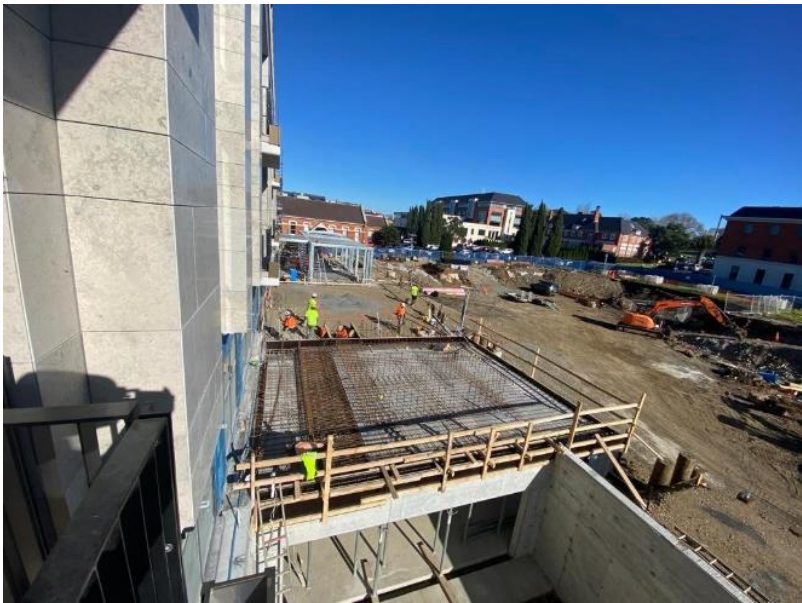


PROJECT UPDATES

We will soon be ramping up the landscaping work, coinciding with the planned scaffold drops. A notable feature of the landscaping design is the stone paving, which presents its own set of technical challenges and detailing similar to those encountered with the stone façade.

In a significant milestone, the Blind and Low Vision area has reached practical completion and is now fully occupied and operational. Working around an occupied space is not without its challenges, and the site team has been committed to successfully maintaining a positive relationship with Blind and Low Vision.

The Foundation team is pleased to welcome Grigory Plekhotkin, Paul Janse Van Rensburg, Lüder Stock, Bernard Tan and Vincent Escalante to the expanding crew. Lev Afon has made a seamless transition to the Quantity Surveying team. We appreciate the collective effort of the team so far and look forward to the remaining few months.



The Grove Stages 2 and 3 Orewa

By Tim Ellery

We've certainly experienced the effects of the change to winter weather and quite a turn it has been. This has hampered the site as we are trying to complete the exterior painting and site works around the bad weather and it has been challenging to say the least.

Garrod Pratt and Anthony Bugarin are accepting this wet, wintery challenge and just getting on with it. We'll get there guys!

The interior has come along well with architect snagging on Level 1 in Stage 2. All the units in Stage 2 are completed and we're doing the commissioning and preparing documentation for lodging CCC. It hasn't come without challenges, with KBL Joinery going into liquidation. Kitchen Mania have now taken over and are doing a great job for us.

John Crowhurst has recently joined the team. Having previously worked for Harbour Construction, John is assisting with façade works and interior snagging of the units. John's experience has proven very useful at this stage of the project to assist in relieving some pressure from the site team.

Murray Johnson has had his knee operation (both knees), and all went very well. He hopes to be back early/mid June, we can't wait to see you back Murray so you can help to see this project over the line.

The project is really taking shape as we head towards completion of Stage 2 (27 units) and then Stage 3 (24 units) in July. Keep up the great work team.



PROJECT UPDATES

The crane was taken down at The Grove on 3rd and 4th April 2023. The team from Prestige did an awesome job getting it down and off site in under two days .



Proxima Residences Newton

By Phil Williams

Proxima is a 9-level apartment building, with a modern specification located on the edge of the CBD adjacent to Newton Road in Eden Terrace. There are 67 apartments between Levels 3 and 9. Apartments are a mixture of 1 and 2 bedrooms on Level 3-8 and Level 9 is made up of 4 penthouses. The team is lead by Neil Spencer as Project Manager.



Construction has progressed to the completion of the concrete structure, which was undertaken by the Kalmar Concrete team, Iloa Pauu, Arona Pere and Laksh Jaishankar, with support from Cole Prendergast and Ahmad Ghalayini.

The site team has expanded further, managed by Site Manager Jason Underhay, to suit the growing workstreams. Suzanne Ellis, managing the completion of the basement, Pedro Silveira and Rafiq Sheikh managing the fit-out, have recently joined the Proxima team along with Paul Leaver who is playing a valuable part in the logistics management, completion of structural steel and crane coordination.



Garth Robertson and Lordkarlo Ibarra are now focusing on getting the building weathertight. The façade cladding finishes are a mixture of Flashclad aluminium boarding, ACP panels and Insol louvres.

Level 9 structural steel is also complete and roof carpentry is progressing. Façade framing, and internal partitions are progressing on Level 5 and 6 with first fix services also underway on these two levels.



With the berm fully removed from the basement and associated ground beams and drainage being completed, the completion works continue with the preparation of the basement slab, under-slab tanking membrane and remaining shotcrete

PROJECT UPDATES



External scaffold is complete with the exception of a portion of the west elevation which is supported off brackets over the neighbours building. All utilities connections are complete including the permanent power which was lived in at the start of January 2023.

Thomas van Roekel is managing the commercials, well supported by Pierre Gonzales, Vicki Guo and Thomas Lindstrom.

The team recently had a social at Holey Moley, with a round of golf and a few drinks to celebrate the topping out of the structure.

On a personal front, Lordkarlo Ibarra will soon become a father and we look forward to introducing you to Kalmar’s newest “addition” in our next newsletter.

And finally, with the new additions to the team, the project is well set for delivery in the first quarter of 2024. Thanks everyone for your effort and contribution.



Te Uru Apartments Stage 8, Hobsonville

By Phil Williams

Te Uru 8 Apartments for Fletcher Living Ltd consists of three buildings; Blocks A,B & C with 72 apartments including a pocket park and EV charging station. The Project is located in Hobsonville Point opposite Memorial Park.



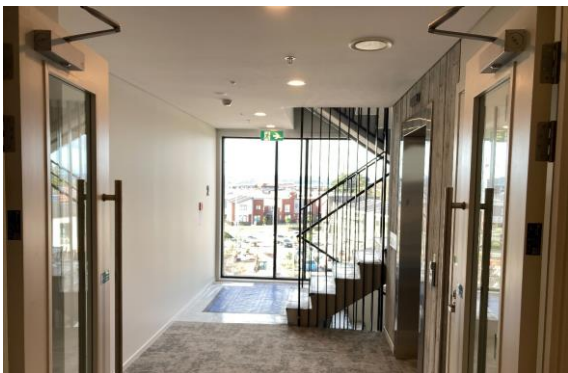
The external elements, including hard and soft landscaping have required a lot of coordination with multiple trades interfacing between the scopes of works, concrete and keystone walls, fences, paths, balustrades, JOAL's and gardens.

The hard landscaping components have been built by Kalmar Concrete, managed by James Stevens with support from Lee Savage and Neil Campbell. This presented a fair number of challenges along the way but allowed the programme of work to be delivered on time and to achieve the specified finish.



Pedro Silveira and Jannie van den Berg have been looking after the interior fit-out works, including progressive close out of the snagging and defects in conjunction with Fletcher Living. With Buildings A&B now complete, Pedro has joined the team on Proxima and Jannie has decided to pursue a new adventure in Australia.

We thank both for their contribution.



PROJECT UPDATES

With the above works now completed, Separable Portion 1 has achieved a significant milestone, with the Code Compliance Certificates uplifted.

The LINZ titling has also been completed, allowing Fletcher Living to take possession from 1st July 2023.

The team recently celebrated their achievement with a dinner at Wildfire. With Brazilian BBQ on the menu, and due to the amount of meat consumed, they fasted for the remainder of the weekend.

Separable Portion 2 (Building C) fit-out is nearing completion, currently snagging apartments and painting communal areas. Sukhdeep Sidhu has had a change of role from façade supervision and is now responsible for the completion of the internals.

Externals works have now begun, with Kalmar Concrete again looking after the extensive Keystone walls and VSL Landscaping completing the Pocket Park. Practical Completion is on track for completion and handover in September 2023.

The commercial team has now reduced, still lead by Luca Denè and supported by Sam Atkinson, and is focused on closing out variations and final accounts. With Luca's European adventure fast approaching they are under pressure to meet their deadline.

The successful delivery of Separable Portion 1 has been a collaborative team effort by Kalmar, lead by Craig Mullane, working closely with Fletcher Living and the design consultants and has resulted in a quality product delivered on time, with a satisfied client.

There have been numerous challenges along the way, but the teamwork by all involved has been the winner.

Great result team.



University of Auckland – L10 – Fisher Building – Office Fit-Out

By Justin De Beer

We have mobilised onto our next project for the University of Auckland, this time an office fit-out on L10 of the Fisher Building. This is another fast-paced turn around and the team are doing exceptionally well with a very tight programme and keeping the disruption to the music school to a bare minimum

Ministry of Social Development – Warkworth Office Fit-out

As part of the New Zealand Construction Alliance team national roll out, we have completed our 8th MSD Office Fit-out in the Auckland region, this time in Warkworth. As always, this was another busy three-week turnaround from users moving out to users moving back in and being operational to serve the public.

The end product looks great, in particular the extensive use of the Autex feature wall linings on this one. On to Waiheke next for the MSD Fit-out team.

Saint Mary’s Chapel, Ponsonby

Our team have been working with the McAuley Trust doing a bit of refurbishment work at the Sisters of Mercy Convent in St Mary’s Bay.

Scope of work included replacing windows, carpentry and a bit of painting and decorating.

During the recent storms, the cross on the original chapel, which was built in 1862, was damaged and we were asked to urgently mobilise a team to help rescue the situation.

With the help of Obelisk Industrial, a crane was arranged to reach the 20m high steeple and the rescue mission was successfully completed.

Well done to all involved.



Updates from Health and Safety



By Gregory Bailey

During March at our project in Orewa, a member of the crane crew unfortunately had a cardiac arrest. The lead scaffolder from Dynaton noticed him collapse and quickly called for help. At the time it was thought he was having a fit, due to convulsions during the arrest.

The team acted immediately with Adam Domok calling the Emergency Services and Vincent Escalante getting the AED (defibrillator). The Senior Site Manager Murray Johnson noticed that he wasn't breathing and started CPR. Vincent Escalante arrived back with the AED and a shock was administered, but this failed to bring him back around. Murray continued with CPR.

The Emergency Services, guided by Cliff Busher, arrived at the scene in the middle of the courtyard and took over from Murray. It was amazing to see the whole team work so well together.

The person involved had another arrest in the ambulance, which meant that the trip to hospital was delayed. We are pleased to report that he is now doing well, has since returned home and is making a good recovery.

A few weeks later Rob Cunnington took the team out for dinner to celebrate the successful outcome.

A Big Thank You to Murray, Cliff, Vincent, and Adam for acting so quickly.

Site Safe Audit 100% Score

Jimmy's Point team received an independent audit from Pavel Kaska of Site Safe.

This audit received a score of 100%. This is a first for the company.

An awesome effort by the team, lead by Branden Venter with Paul Dine, Gerhard van Zyl and Lance Blomfield keeping a close eye on what's happening on site. Great stuff Team Jimmy's Point.

It shows that not walking on by works! The team celebrated their success with a Braai (BBQ).



KALMAR STAFF NEWS

Kaustubh Shinde was presented with his New Zealand Diploma in Construction (Level 6 Quantity Surveying) graduation certificate at a ceremony at the Auckland Town Hall on the 4th of April. Congratulations Kaustubh.



May 25th 2023

As a treat for the Remuera Gardens team, Kaustubh whipped up an assortment of Chaat, traditional Indian snacks bursting with flavour and spice. The team had a blast trying out these treats and enjoying Kaustubh's graduation celebration.

Inna Goodwin



THE BIGGEST LOSER

By Ross Duxfield

We had 36 staff members enroll in this challenge, along with a few others I am aware of who did it casually without enrolling. Six sites participated; Head Office, Onehunga Mall Club, Remuera Gardens, Oakridge Kerikeri, Jimmy's Point and Te Uru 8. This was a very good buy-in and just goes to show how much we value looking after ourselves.

Craig Curling (pictured left with Ross Duxfield) took out the prize for the Male Biggest Loser and Georgia Nesbit (pictured right with Ross Duxfield) took out the prize for the Female Biggest Loser.



The highest scoring team was Head Office, championed by Alana Adamson. Well done to Alana and the team. They received a healthy fruit box to snack on.

The competition finished on 6th April...just before the Easter Weekend. We all know what that means!



The winning team from left to right: Rob Cunnington, Craig Curling, Tim Ellery, Alana Adamson, Glenn Wong and Prashanth Karl

New Arrivals

Our little bundle of joy has arrived!

I've been kept busy adapting to my new role.

Please share our joy and help us to welcome little **Ian Chen** into the world! 🐼

Born April 4th at 3:12pm - 3.1kg, 50cm



Proud Parents, Jacob Chen and Faye Yu

Branden and Lindie Venter welcomed their second son Blake into the world on 8th April 2023. Pictured below with big brother Logan who is 5.



UPCOMING EVENTS

2023

SOCIAL CLUB

CONFIRMED EVENTS

Mid-Winter Christmas Races at Alexandra Park
Thursday, June 29, 2023

All Blacks vs South Africa - Mt Smart Stadium
Saturday, July 15, 2023

Master Builders Charity Comedy Night
Thursday, July 27, 2023

PLANNED EVENTS

FIFA Women's World Cup - Opening Ceremony with NZ vs Norway
Thursday, July 20, 2023

Tough Guy & Gal Challenge Corporate Challenge 6km
Saturday, August 5, 2023

Social Cooking Challenge
Mid-September TBC

Mates in Construction Charity Boxing Night
16th September 2023

Drift Car Racing
Mid-October TBC

Auckland Marathon - 42km, 21km, 11km, 5km and 2.2km Children's event
October 29, 2023

Waiheke Wine Tour
November 18, 2023

Fishing Trip
Early December

Site Events

20th April 2023

Metlifecare Orion Point Roof Shout



Queuing for the ever popular Brazilian Barbecue



Always smiling, Eric Yuan enjoying a salad for lunch.... followed by?

NZIOB Kalmar Fishing Competition

24th February 2023

The weather was not the best, but this did not deter the serious fisherfolk who took to the waters at 6:30am, come rain and no shine. Some even overnighted on the water to miss the Auckland traffic and have a lie in. To our fantastic sponsors and everyone who braved the conditions, thank you for making this competition such a great event. The important stuff, like who caught what, is on the next page.



NZIOB Kalmar Fishing Competition cont.

John Dory	None caught.	
Trevally	1.080kg	Natalie Lee from CMP Construction
Kahawai	2.289kg	Brian Snooks from Hawkins
Kingfish	8.210kg	Scott Ruddy from Eurotech
Women's Category	1.989kg Snapper	Aroha Speers from Hirepool
Snapper	5.761kg	Rob Cunnington from Kalmar Construction

NZIOB Placemakers Annual Golf Tournament

By Justin De Beer

Pakuranga Golf Club

6th March 2023

On a mildly dry summer's day, Team Kalmar fronted up for another crack at winning the annual NZIOB Golf Day. Turns out when you take a builder, project manager and an architect out on the golf course it doesn't work as well as one of our projects. The builder was a bit all over the place at times but got there in the end, the project manager steadied the ship from time to time when the builder needed a bit of help, and our architect was always at hand to fill in the missing gaps when the rest of us looked confused.

Many thanks to all the sponsors for a most enjoyable day out, regardless of our golfing abilities.



From left to right: Luca Van Brandenburg (TBIG) Cameron Nelson, Justin De Beer, and Aimee Lee (Cottee Parker).

2023 Evening of Celebration - Health, Safety and Wellbeing Awards

By Bert Denee

8th March 2023

Kalmar, as the sponsor of the Mental Health Award at the Evening of Celebration, congratulate our staff who received their NZ Certificate in Workplace Health & Safety Practice (Level 3) at the awards evening. Certificates were presented by Brett Murray from Site Safe who is pictured with Craig Curling, Jacobus Mienie, Neil Spence, James Stevens, Michael van der Walt and Alan Watson. (Absent: Nick Watson who also graduated, but was unable to attend.)



New Zealand Commercial Projects Awards

19th May 2023

Kalmar entered two projects in this year's New Zealand Commercial Project Awards; The Marlborough and 308 Remuera Road.

The projects were judged earlier this year by the Masterbuilders panel including Richard Harris, a director of Jasmx. Bronze award winners need to score at least 70% of the available points, Silver Award 80% and Gold Award 90%.

At the Award Gala Dinner at Shed 10 on Queens Wharf, which was a sell-out with over 700 people in attendance, both projects won Gold Awards.

Well done to Lüder Stock and Nicholas Botha and their respective teams for earning recognition from the industry, which was well deserved!

We also had two very happy clients with us: Neville and Sue Fong from 308 Remuera Road, and James Burgess and Kade Motley from Winton.



Mid-winter Medieval Supper

Kumeu Valley Estate 28th May 2023

Not everyone dressed up, but those who did looked fantastic. Rob landed up in the stocks. Who knew throwing food at him would be such good fun. Some people even went back for seconds, including his wife!





Kalmar Social Club - Sweet Axe Throwing Competition

1st June 2023

This event was something that bothered me for a few days. “What if someone gets hurt?” The day arrived, worry and anxiety ran through my veins. Our troop arrived and the game was on. We had both a male and female instructor, and I was lucky enough to be the student of the female instructor. She was loud, strong, and awesome. After listening to their lengthy safety instructions and rules, and as my name starts with the initial “A”, I was called up first, followed by Cole.

I picked up the axe with both hands and aimed at the target board. I managed to throw the axe at the board, but it landed far away from the bullseye. Cole was very strong and was able to pick up the axe with one hand and throw it at the target. There were 14 of us and it was interesting to see a different side to each individual. They were strong, some were naturals, some looked like vicious warriors, scary, powerful and competitive.

Vish Veeramani was a first timer like many of us. He was a fast learner and very quickly became skilled, and competitive. Nikolai Zakharov was a natural. Axe throwing reminded him of his childhood.

Nick Rew reckons axe throwing is something more active and challenging, different to any other social activities he has attended. He felt the competitiveness from other members of the team, which encouraged him to try harder.

Harold Fulo loved this social event. He found it fun and exciting. He thought it would be great to see more female participants, however, it exceeded his expectations.

Donovan Ratner enjoyed the pizzas! Brendan Vannan had done this before, he was competitive, and was tough to beat. At the end, we were defeated by Brendan who was the overall winner of Sweet Axe Throwing evening.

Time went by unnoticed because we were having fun. The hazards were well-managed, controlled and no one got hurt. We look forward to doing it again.

Ann Chia



Kalmar's State of the Nation

21st June 2023

It's been a while since everyone has gathered for the "State of the Nation." Great having the hangar in Hobsonville available to accommodate the growing Kalmar team, and thanks goes to the Jimmy's Point guys for getting everything ready. As some contracts come to an end, we look ahead to what's next and hear from each Project Manager what progress they are making on their sites. A Brazilian BBQ from Aloisio went down well too. It's the people who make our construction sites come alive.

